

Inside Bratton 2025



CONTENTS

Table of Contents

1	The History of Bratton.....	4
1.1.	Geographical Constraint.	4
1.2.	Pre-History.	4
1.3.	The Middle Ages.....	4
1.4.	Farming and other Land Use.....	5
1.5.	Housing and Activities up to the mid-19th century.	5
1.6.	Churches.	6
1.7.	Reeves Ironworks.....	6
1.8.	Schools.	6
1.9.	Services.	7
1.10.	The 1970's – Housing Estate Development.	7
1.11.	Recent Housing Development.	7
2	Bratton Culture	8
2.1.	Introduction	8
2.2.	Arts and Crafts	8
2.3.	Music.....	9
2.4.	Performance.....	10
2.5.	Dance	11
3	Physical Recreation	12
3.1.	Introduction	12
3.2.	Play.....	12
3.3.	Sport.....	13
4	Compendium of Bratton clubs and societies – July 2024	15



Table of Images

Image 1 - St James' Church from south-west by John Bucker, 1908 Reproduced courtesy Wiltshire Heritage Museum	6
---	---

Table of Photographs

Photo 1 - Frontispiece - Bratton History Walk.....	1
Photo 2 - Reeves Ironworks Plough.....	4
Photo 3 - Traction engines by Church Road (postcard)	5
Photo 4 - Sheep dipping in Stradbrook (postcard)	5
Photo 5 - Lower Mill.....	5
Photo 6 - The Baptist Chapel	6
Photo 7 - Monument to Reeves Ironworks	6
Photo 8 - The new Bratton Primary School (1930 postcard)	6
Photo 9 - Luccombe Mill and House (Bratton History Association archive)	7
Photo 10 - Ethendun Councillor, Village Crier & Parish Chair.....	8
Photo 11 - Platinum Jubilee Art Exhibit in Jubilee Hall	8
Photo 12 - Platinum Jubilee Mosaics on Jubilee Hall facade	8
Photo 13 - Garden Art.....	9
Photo 14 - Bratton Silver Band performing on Village Green.....	9
Photo 15 - Bratton Brass Roots – prize-winners (Courtesy White Horse News)	10
Photo 16 - Bratton Jubilee Players perform in the Jubilee Hall	10
Photo 17 - Bratton Wassail taking place in Reeves Orchard	11
Photo 18 - Village Green Play Area	12
Photo 19 - Bratton Silver Band performing on the Village Green	12
Photo 20 - Bratton Recreation Ground.....	13
Photo 21 - Junior Football Practice.....	14



1 THE HISTORY OF BRATTON

1.1. Geographical Constraint.

Although the Parish of Bratton extends over 15 kilometres² and is about seven kilometres from north to south and about three kilometres from east to west, the main settlement area is about one square kilometre. The chalk escarpment of Salisbury Plain has set a limit to the Village settlement to the south. The eastern boundary of the Parish has been determined by the course of the stream known in the Middle Ages as the Milbourne and later as the Stradbrook, fed by the Luccombe and Church Springs. The northern and western boundaries of the Parish largely have no distinct geographical features.

1.2. Pre-History.

The first occupation of this area was almost certainly up to 6,000 years ago in the area now known as Bratton Camp on the east boundary of the Parish, above the White Horse. Bratton Camp (or Castle) was built between 800 BC and 50 AD. Settlement there, by the Dobunni tribe, continued into the Romano-British period.

1.3. The Middle Ages.

Various isolated finds of Roman material have been discovered on the lower ground between Bratton and Westbury, although there is no remaining evidence of Romano-British settlement. The Angles and Saxons then arrived and three settlements were created in the relatively protected areas with springs in the small valleys below Bratton Camp. These all have Saxon names: Braectun (*a settlement with newly cultivated land*):

Stoc (*a secondary or dependent settlement*, almost certainly of Westbury and later called Stoke and then Littlestoke): and Milbourne (*a stream with a mill*, later alternatively called Stradbrook). Littlestoke almost entirely disappeared, with the exception of St James' Church, probably as a result of the Black Death in the mid-14th century. In the Saxon, Norman and subsequent Middle Age periods, the area of Bratton was owned by various manors, with the ownership changing often. Buildings were generally short-lasting, with the exception of the Church which was originally Norman, possibly built on the site of a Saxon chapel. By the 13th century some houses were built with timber frames with the oldest surviving example being the Court House (14th Century) in Braectun/Bratton. In 1377 poll tax payers in Bratton numbered 169.



Photo 2 - Reeves Ironworks Plough

1.4. Farming and other Land Use.



Photo 4 - Sheep dipping in Stradbrook (postcard)

In common with all English rural areas, the main occupation for people in Bratton was farming and related activities such as milling. There were several hill farms in the southern half of the Parish, on Salisbury Plain, where grazing of sheep was predominant although some arable farming did take place in the south-eastern area. North of this, and also to the west of the current Village, the land was mainly arable, and further north still were pasture and hay meadows. There were at least 24 farms within

the Parish boundary, a number that has substantially decreased in the past century. Four mills existed on the

Milbourne: the lowest and probably the first, mentioned in 1221, was Lower Mill, off Lower Road:

Bridge Mill was on the north side of the Bratton-Edington road; further upstream and south was Aldridge's Mill, now converted to the three houses of Cleeve Terrace, beside the Stradbrook road; and the most southerly was Luccombe Mill, beside the Imber Road. The latter mill has been demolished but the

house beside it, and the mill pond, remains. These mills were for originally for grinding corn but later one and possibly two of them were used in the cloth

industry for fulling. In the 14th and 15th centuries Wiltshire was one of the most important clothing manufacturing areas in the country, with towns close to Bratton being prominent.



Photo 3 - Traction engines by Church Road (postcard)

1.5. Housing and Activities up to the mid-19th century.

In the 17th century the Longleat Estate bought a considerable amount of land in Bratton Parish. Its records mention many houses, cottages and farms that still exist today, mostly identifiable by their timber frames. Records from this period show that in addition to farmers, many in Bratton were employed as fullers, weavers and clothiers. Furthermore, they include a carpenter,



Photo 5 - Lower Mill

blacksmith, tailor, cordwainer (boot and show maker), butcher and alehouse keeper, showing that Bratton was a largely self-sufficient village. Fruit farming was extensive in the Village in the 19th and first half of the 20th Century. The 18th century saw something of a building boom in Bratton, including Winters (towards the east end of Lower Road), Bratton House, and Smarts (now called Yew Trees, in Lower Road) and several smaller cottages. There was also a significant amount of

re-building and extension of older houses, such as Grange Farm (Lower Road), Ballards (Bury Lane), Scotts Farm (also Bury Lane), Pear Tree Cottage (Court Lane) and Melbourne House (Melbourne Street). Brick was increasingly used as a building material.



1.6. Churches.

St James the Great' Church (Church of England) was originally a chapelry of Westbury. The Norman building was very extensively enlarged and rebuilt in 1400. After many attempts over 300 years it became an independent parish church in 1845, albeit remaining part of the Westbury benefice. In 1995 it became a parish within a separate benefice (including Edington, Coulston, Erlestoke and Imber) but the rectory/vicarage remains in Bratton. Non-conformist religion has been strong



Image 1 - St James' Church from south-west by John Buckler, 1908 Reproduced courtesy Wiltshire Heritage Museum



Photo 6 - The Baptist Chapel

in Bratton for at least three centuries, largely due to the influence of prominent village families. There have been several chapels in various parts of the village but the one remaining is the Baptist Chapel (built 1734 and extended several times), which is still very popular and attracts a congregation

villages as well.

from many neighbouring

1.7. Reeves Ironworks.

Robert and John Reeves founded Reeves Ironworks in about 1840, using their complementary skills of carpentry and blacksmith. This was established on the area that is now occupied by the village green and expanded rapidly with all functions needed to produce farming machinery. The workforce increased from about 40 in 1851 to 69 in 1914. However, after World War 2 the company was unable to compete with larger, international firms and went into receivership in 1970. The entire works was demolished in 1973.



Photo 7 - Monument to Reeves Ironworks

1.8. Schools.



Photo 8 - The new Bratton Primary School (1930 postcard)

Although there were relatively few children in the Village prior to the mid-20th century, several schools were established: The British School (non-conformist) in Stradbrook (1844); the National (Anglican) School (probably from 1820 and now The Oratory at the top of The Butts); and Whitaker's School (18th century and now Yew Trees in Lower Road). All these have eventually been converted to houses. Bratton Primary School was opened in 1928 and children from Bratton and some from

neighbouring villages and towns are now educated there. There has been a flourishing pre-school in the village for many years, now run from the Pavilion on the Village Green as part of Cygnets Pre-School based in Westbury. A toddlers group also operates weekly in the Church Institute.

1.9. Services.

The services which made Bratton self-sufficient have all gradually disappeared. However, Bratton does still have a variety of services that meet today's needs. There were four pubs but now only one, The Duke, (dating from the early-19th century) remains, although it does include a popular restaurant. The individual food shops have also reduced to one, Hillworth Stores, dating from 1906 and extended in 2002, which includes a bakery and Post Office. Bratton Surgery is an outpost of Westbury's White Horse Health Centre, valuably offering consultation, basic nursing and a dispensary. Technically in Edington but generally considered to be in Bratton, Fitzroy Farm has a popular coffee shop and light restaurant, a hairdresser and Bratton Plant Centre. Several very small companies and sole-traders are run from houses in the Village. Bratton benefits from two village halls: the Jubilee Hall (1887 and extended in 1987 and 2002) is the home of the Jubilee Players amateur dramatic group and is also hired regularly and for individual events; and the Church Institute (1910) is the home of Bratton Silver Band and several other community organisations, many for children. The land for the Recreation Ground (beside Trowbridge Road) was donated in memory of Horace Seymour in 1998 and it now offers a cricket pitch, two football pitches and a trim trail as well as a large pavilion.

1.10. The 1970's – Housing Estate Development.

The number of houses in Bratton increased very significantly in the 1970's as a result of two large housing estates being built in infill areas. Southay, Ethandun and The Picquet were built in the mid-70's and Manor Fields was built in the late-70's. Rosenheim is a smaller estate and was built in 1976-78.

1.11. Recent Housing Development.

More recent houses have been built either individually or in quantities of up to four, all as infill developments.

Report courtesy of:

Bratton History Association

www.brattonhistory.co.uk

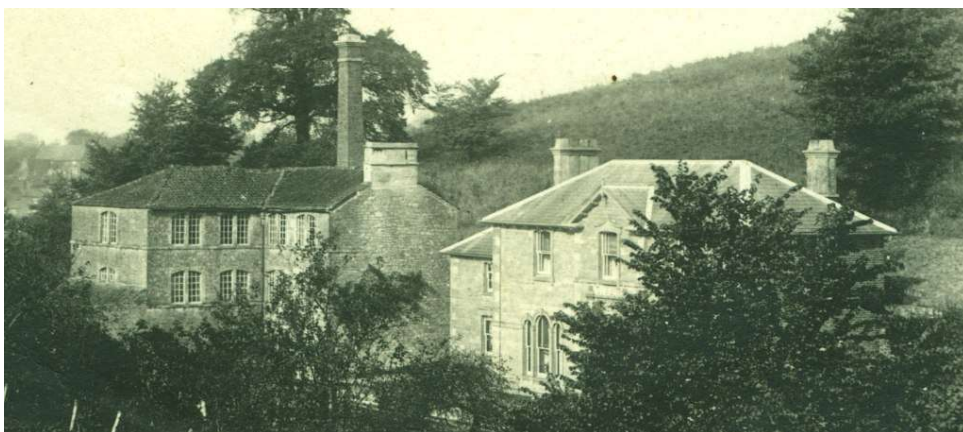


Photo 9 - Luccombe Mill and House (Bratton History Association archive)



2 BRATTON CULTURE

2.1. Introduction

Bratton residents have a strong interest in the arts. These take place mainly in the Jubilee Hall and the Church Institute buildings: though some are more appropriately held outside.



Photo 10 - Ethendun Councillor, Village Crier & Parish Chair

2.2. Arts and Crafts

Bratton residents' commitment to the arts was exemplified by the installations prepared for Her



Photo 11 - Platinum Jubilee Art Exhibit in Jubilee Hall

associations in the Village. (arranged into a delightful garland).

Late Majesty Queen Elizabeth II's Jubilee celebrations. In the accompanying photographs can be seen paintings by a local artist adorning the Jubilee Hall stage, surmounted by 70 hand-embroidered pennants, one for each year of Queen Elizabeth's reign. These were prepared by the various clubs and

Local artists designed three mosaics which were then completed by residents under the tutelage of a local teacher. This was funded with a grant from Arts Council England. They now adorn the walls of the Jubilee Hall.



Photo 12 - Platinum Jubilee Mosaics on Jubilee Hall facade

Weekly and monthly art classes are held in the Jubilee Hall, attracting at least ten participants.

Eight people attend the twice-monthly University of the Third Age art classes in the Church Institute. The Women's Institute has a craft group and the Baptist Church organises craft activities for children.



Photo 13 - Garden Art

Bratton also holds a bi-ennial **Art in the Gardens** festival, with a featured trail of installations by local artists on public display in Bratton residents' gardens.

2.3. Music

The renowned Bratton Silver Band was formed in 1859. It is one of the oldest brass bands in the country and has a rich history. The band performs a mix of contemporary and traditional brass band music and is based in the Village. They promote music in their local community and play at



Photo 14 - Bratton Silver Band performing on Village Green

many events throughout the year. Their organisation is innovative and forward thinking, recently commissioning a new work called "The Lost Village of Imber" which was performed at the 2023 National Brass Band Championships.

The band is ranked in the Third Section nationally

and competes in brass band contests several times a year. It has been honoured to represent the



West of England in the National Brass Band Championship Finals five times, competing at Wembley, Dundee, Harrogate, Cardiff and Cheltenham.

They have recently expanded, forming the Brass Roots Band to encourage children to take part in learning to play musical instruments. This has created a lot of enthusiasm amongst local schools. As a result, the Bratton Brass Roots has WON the Classic FM award 2024 for Best Learning Initiative. The award of £3000 will allow this important work to continue.



*Photo 15 - Bratton Brass Roots – prize-winners
(Courtesy White Horse News)*

A local choir (Steeple Rocks) uses the Jubilee Hall weekly, attracting 50 people from Bratton and neighbouring villages.

A local group of folk musicians entertain the locals monthly in the Duke public house.

2.4. Performance



Photo 16 - Bratton Jubilee Players perform in the Jubilee Hall

The **Bratton Jubilee Players** put on several theatre shows each year in the Jubilee Hall: a pantomime in November, a play in May and a Murder Mystery Dinner in June, with dinner and drinks provided by the Hall.

The Bratton Jubilee Players meet every week in the Jubilee Hall.

Bratton celebrated its first wassail in 2024, in Reeves Orchard and plans on having an inaugural Spring Blossom event in May 2025.



Photo 17 - Bratton Wassail taking place in Reeves Orchard

2.5. Dance

Weekly tap-dance lessons are held in the Jubilee Hall, attracting ten participants.

Term-time ballet classes for ages 5-13 are held weekly in the Church Institute, attracting 15-20 children.



3 PHYSICAL RECREATION

3.1. Introduction

Bratton has two publicly available areas for recreation: the Village Green, in the centre of the Village, and the Recreation Ground, to the north of the Village. Both sites are owned by Bratton Parish Council.

3.2. Play

Bratton Village Green is a safe area, with a well-equipped children's play area. There is plenty of green space for visitors to sit and watch the play, kick a ball around, and play games.



Photo 18 - Village Green Play Area

The Village Green is the scene of major village events, including open-air concerts and national celebrations.

The Village Green play areas are maintained and refurbished by volunteers and new equipment was part funded by The Hills Group, administered through Wiltshire Community First, and Tesco Community Fund.



Photo 19 - Bratton Silver Band performing on the Village Green

3.3. Sport

Bratton is fortunate to have an excellent Recreation Ground, which is used primarily for team sports. The grounds are used by teams from the surrounding area as well as Bratton's own sports teams.



Photo 20 - Bratton Recreation Ground

The Recreation Ground is on the north side of Bratton, on Trowbridge Road. It is maintained to a high standard voluntarily by a committee and a team of villagers. The Ground is registered as a Queen Elizabeth II Field in Trust, which provides strong legal protection for recreational use in perpetuity.

The land for Bratton's Recreation Ground was presented to the Village by Antonia Southern in memory of her husband Hugo in 1997.

It has been regularly developed since its inception in 1998 and now provides a wide range of excellent facilities:

- A full-size football pitch; this is currently used as the home pitch for Bratton FC on Saturdays, and Westbury Rovers FC on Sundays.
- A youth football pitch; this is currently used as the home pitch for Westbury United FC U11 and U12 and St Andrews FC U11 Cardinals (from North Bradley).
- A cricket square with six wickets, one of which is an artificial surface; this is currently the home pitch for Bratton CC (on Sundays), and Trowbridge 3rd and 4th XI's (on Saturdays). The square is regularly rated as having very high quality.
- An ECB-standard cricket net, a mobile batting/bowling cage, and a boundary rope.
- A trim trail; this is an outdoor exercise area around the edge of the Ground, with apparatus for exercises such as press-ups, straddle jumps, sit-ups, monkey bars, chin ups, vaults and pole climbs. Use of the trim trail is free of charge.
- A single basketball net and tarmacked area.



- A pavilion with changing rooms, showers, an officials' room, a fully-equipped modern kitchen, a team room for social use, and storerooms.
- A large car park that can take at least 30 cars.

In 2016 pavilion was extended by building a team room. This is adjacent to the kitchen and provides facilities for teams and supporters to sit down and take refreshments, and for organisations and families to hold social events.

As well as use by the football and cricket teams from Bratton and neighbouring towns and villages, the Ground and pavilion are regularly used by Bratton's youth groups and by families and



Photo 21 - Junior Football Practice

individuals. It is available 24/7 for informal use by Bratton villagers at no cost. The Ground is normally available for hire for individual matches. It is also available for hire for organised small social and entertainment events, although loud noise and camping are prohibited.

Bratton Recreation Ground has regularly received grants from Westbury Area Board towards improving the Ground, the buildings and the maintenance equipment. Recently this has included building the team room and installing new showers. Wiltshire Community Foundation, the English Cricket Board, the Football Foundation and the National Lottery Awards for All scheme have also provided grants for development of the facilities.

4 COMPENDIUM OF BRATTON CLUBS AND SOCIETIES – JULY 2024

Organisation	Description
Ballet Classes	Thursdays 3.30-8.30 in Bratton Church Institute Further details from the website: http://www.morphewschooldance.co.uk/
Bratton Rainbows	Rainbows are the youngest members of the Guide Association, Girlguiding UK aged between 5 and 7 years old. Rainbows choose their uniform from a selection available; here at Bratton we wear the Red polo shirt with a blue tabard. Please ask the Guider for details of how to purchase or hire the uniform. When you join Rainbows, you will be given a welcome bag with a booklet called 'Ready for Rainbows', which tells you all about the things that we do; we play games, do crafts, sing songs, learn new skills and have lots of fun doing it! Rainbows, like all members of the Guide Association are required to make a promise: 'I promise to do my best, to love my God and be kind and helpful.' When she makes her promise, a Rainbow is then issued with a Promise badge to wear on her uniform
Bratton Baptist Church	Located at the end of Carpenters Lane near the centre of the village. It is very active, offering children and young people's groups; home and church Bible study groups and activities which go on throughout the year. The Grade Two listed chapel was built in 1734 and there has been worship in the area since 1662. A Children and Families Worker, appointed by the church to offer support to children and families within the village, is a visible presence in the community. http://www.brattonbaptistchurch.org.uk/
Bratton Bell Ringers	We would be delighted to invite you to join us if you are already a ringer. If you have never rung and would like to 'have a go', or learn in earnest, then we would be pleased to welcome you. It does not require much strength, so teenagers and older folk all qualify as potential candidates; for some of us, the most tiring bit is climbing the stairs of the bell tower! We practice at Edington on a Tuesday evening from 19:00 to 20:30 and occasionally at Bratton 19:00 to 20:30 – please check beforehand. You may find details in the church porches, or contact a ringer (see below). It would be appreciated if those more experienced ringers out there joined us (please), both for practice and Sunday service ringing; ringing for between half and three-quarters of an hour before services both in Bratton and Edington (with more ringers we could cover Erlestoke services too).
Bratton Brownies	We meet on a Thursday at the Church Institute from 5.45 to 7.15 term time only.
Bratton Bugs	Fridays (term time) at 1.45 – 3pm @ the Baptist Chapel. Bring your under 5s to enjoy a time of music making, singing and play. £1.50 per family.



Organisation	Description
Bratton Church Institute	<p>A charming, late Edwardian building with many original features. The building sits within an extensive, level, and fully fenced lawned plot which can be used to put up a sizeable marquee, gazebos etc. The Institute building comprises a hall, which can readily seat 90 people; the Oratory meeting room, which can seat 16 and is popular as a committee meeting room; a kitchen and modern toilets.</p> <p>The Church Institute is a popular venue with Bratton's associations.</p>
Bratton Cricket Club	<p>Your village cricket club will be playing 10 matches on Sundays and Wednesday evenings this season and we are always looking out for new players.</p> <p>Cricketing skill and experience are not essential – as many of us have demonstrated over the years! Nets and coaching are available.</p> <p>We welcome everyone, whether you'd like to play all 10 games or just one or two.</p>
Bratton Doctor's Surgery and Dispensary	<p>Bratton's Doctor's surgery is part of the Westbury Group Practice Bratton Surgery, The Tynings, Bratton, Wiltshire, BA13 4RR</p>
Bratton Football Club	<p>Bratton Football club are an adults' football team who currently play in the Wiltshire Senior league Division 1.</p> <p>We were formed 8 years ago as 'The Three Daggers', followed by 'The Duke FC' and the 2023/2024 season resulting in a change of name to comply with league regulations to Bratton FC.</p> <p>We train on a Tuesday evening, where anyone is welcome. We also play on a Saturday afternoon, typically a 15:00 KO.</p>
Bratton History Association	<p>The Association aims to provide all those curious about their local history with an opportunity to meet, exchange ideas, and discover more about the history of Bratton and Wiltshire. Activities include monthly meetings, talks by professional historians, social events and our own local history project.</p> <p>Meetings are held every 3rd Sunday of each month (except June, July, August and December), at 4pm or 5pm, at the Church Institute in Bratton. Each meeting includes a talk by a guest speaker on a topic of local or regional interest, although subjects with wider relevance to local historians are also chosen.</p> <p>For full details about membership, upcoming talks and BHA activities please visit: Website: www.brattonhistory.co.uk</p>



Organisation	Description
Bratton Jubilee Hall	<p>The Jubilee Hall is a charitable trust, managed by a voluntary Committee of Trustees: the Bratton Jubilee Hall Management Committee (BJHMC) who undertake the upkeep and running of the Hall.</p> <p>The Jubilee Hall is home to many activities and clubs, and can accommodate an audience of up to 100 seated, or 70 seated at tables. It is fully equipped with sound, projection and screen and has a fully equipped kitchen and bar area, perfect for parties, wedding receptions etc.</p> <p>On the first Sunday of the month, the management committee prepares a three-course breakfast, which is very popular with villagers. Occasional events are quiz nights, skittles and dinner dances.</p> <p>Further information and photos of recent events can be found at the Bratton Jubilee Hall website.</p>
Bratton Jubilee Players	<p>Meet Wednesdays at 8pm - 10pm in the Jubilee Hall</p> <p>Open to everyone, acting, costumes, makeup or backstage and always welcomes new members. The Players put on 2-3 shows a year: a pantomime in November, play in May and a Murder Mystery Dinner in June, with dinner and drinks provided by the Hall. For more information Contactjubileeplayers@gmail.com or Facebook</p> <p>Jubilee Players' website link</p>
Bratton Mother, Baby and Toddler Group	<p>Wednesday 9.30 - 11.30 in Bratton Church Institute</p> <p>The group is a stay and play group for all children under five who are accompanied by mother/father/guardian/grandparents/childminders etc, at a cost of £2 per child and 50p for each additional sibling.</p> <p>We offer a range of toys to play with for all ages up to 5 and a snack for parent and child is also provided. We also offer seasonal parties and games for little ones at no extra charge.</p>
Bratton Parish Council Allotments	<p>The Parish Council owns two allotment sites in the Village.</p> <p>SITE 1 – MILLDITCH ALLOTMENTS</p> <p>At the present time six of the seven allotments are occupied by four allotment tenants with two of the tenants occupying two each. The seventh site has not been occupied for a number of years.</p> <p>SITE 2- GALES GROUND ALLOTMENTS</p> <p>12 allotments were established in the 1990s on formerly MOD land. Nine of the current allotments are occupied by eight tenants, one of whom occupies two plots.</p>
Bratton Parish Council	<p>The Parish Council has nine elected Councillors and a part-time Parish Clerk. Meetings are held in the Jubilee Hal on the second Tuesday of alternate months, to deal with the business of a thriving community.</p> <p>https://brattonparishcouncil.gov.uk/</p>
Bratton Parish News	<p>A free monthly newsletter about forthcoming events that is produced by a group of volunteer editors and distributed free of charge to every dwelling in the Village.</p>



Organisation	Description
<i>Cygnets pre-School</i>	Located in the parish council owned Pavilion on the Green, has improved their outdoor facilities for play. This preschool, rated 'outstanding' by OFSTED, has proved extremely popular, attracting children from beyond the Parish, supporting the future of the Primary School, and providing social continuity for pupils as they move through the local educational establishments
<i>Bratton Primary School</i>	<p>Bratton Primary School is situated in the centre of the village.</p> <p>The school grounds are extensive and comprise grassland and trees, flower and herb areas, a large playing field, games areas, playground and adventure playground, gazebo, wildlife pond and an all-weather path.</p> <p>The school is at the heart of the village community. Pupils take part in all sorts of village activities and there are links with the Bratton pre-school, St James Church, Bratton Baptist Church, and local youth groups. Pupils represent the school with demonstrations of P.E., drama, dancing and singing at local community events.</p> <p>Visit: www.bratton.wilts.sch.uk</p>
<i>Bratton Recreation Ground</i>	<p>This popular ground is owned by the Parish Council. Bratton's Recreation Ground is registered as a Queen Elizabeth II Field in Trust, which provides strong legal protection for recreational use in perpetuity.</p> <p>It has been regularly developed since its inception in 1998 and now provides a wide range of excellent facilities:</p> <ul style="list-style-type: none"> • A full-size football pitch; this is currently used as the home pitch for Bratton FC on Saturdays, and Westbury Rovers FC on Sundays. • A youth football pitch; this is currently used as the home pitch for Westbury United FC U11 and U12 and St Andrews FC U11 Cardinals (from North Bradley). • A cricket square with six wickets, one of which is an artificial surface; this is currently the home pitch for Bratton CC (on Sundays), and Trowbridge 3rd and 4th XI's (on Saturdays). The square is regularly rated as very high quality. • An ECB-standard cricket net, a mobile batting/bowling cage, and a boundary rope. • A trim trail; this is an outdoor exercise area around the edge of the Ground, with apparatus for exercises such as press-ups, straddle jumps, sit-ups, monkey bars, chin ups, vaults and pole climbs. Use of the trim trail is free of charge. • A single basketball net and tarmacked area. • A pavilion with changing rooms, showers, an officials' room, a fully-equipped modern kitchen, a team room for social use, and storerooms. • A large car park that can take at least 30 cars.



Organisation	Description
Bratton Silver Band	<p>Bratton Silver Band has a long history dating from 1859, making it one of the oldest brass bands in the country. We play many concerts in our local community and are a committed contesting band currently placed fourth in the 3rd section. We are working hard to gain a place in the 2nd section.</p> <p>Rehearsals: 8pm to 10pm, Monday & Friday</p> <p>Bandroom: Bratton Church Institute, Tynings Ln, Bratton, Westbury BA13 4RR</p> <p>If you wish to join the band or just come along to play, please contact our Player Manager Kirsty Westlake: playermanager@brattonsilverband.com</p>
Bratton Village Green	<p>Bratton is fortunate to have a well-appointed Village Green, set in the centre of the village. This is used for many public events, including performances Bratton's Silver Band and major celebrations. It has a recently refurbished and enhanced play area for younger children. (Equipment is inspected for safety on a weekly basis)</p>
Bratton Women's Institute	<p>Membership is open to all women over 16, and annual membership includes a monthly meeting, a monthly national magazine, plus Wiltshire Federation's newsletter.</p> <p>We meet at 2.00 p.m. at the Church Institute Hall every 1st Tuesday of each month, except for August, when our programme includes an annual outing.</p> <p>A full programme of events, plus posters etc. are displayed in the village notice boards attached to the Jubilee Hall.</p> <p>Other regular monthly activities include:</p> <ul style="list-style-type: none"> • Book Club • Walking Club
Coffee Pot	<p>Thursdays 10-12 in Bratton Church Institute</p> <p>Enjoy freshly brewed coffee and delicious home-made cakes while you chat to villagers.</p>
Comets Club	<p>Meet usually 3rd Friday at 6.30pm in the Baptist Chapel</p> <p>Comets is a club for children in school years 3, 4, 5 & 6. Each club night is themed, and the children engage in games and craft activities, and includes a refreshment break.</p>
Dance and Tap Class	<p>Tuesday 1320 - 1420 in the Jubilee Hall</p> <p>Dance/tap</p> <p>A class for all levels</p>
Dolly Mixtures Art	<p>Last Friday of the month 9.30 - 12.30 in the Jubilee Hall</p> <p>The class investigates more experimental art, sometimes with a visiting tutor. There is an exhibition of their art 18th -20th October, with a preview on Friday 18th. Watch out for more details.</p>



Organisation	Description
Four Villages Link	<p>The Four Villages Link (TFVL), a registered charity, is your local community support group, which can provide you with assistance should you require it. Whilst we support and complement local health and social services, we are able to operate at a far more personal level and all our volunteers are DBS checked and carry identity badges.</p> <ul style="list-style-type: none"> • Organising transport to and from appointments including hospitals in Bath & Salisbury as well as local medical centres • Carrying out small simple jobs around the house that do not require the services of a specialist tradesman • Befriending • Shopping • Occasional dog walking or gardening • Resolving basic computer issues.
Fusion Youth Club	<p>Meet usually the first Friday in the month in the Baptist Chapel</p> <p>A youth club for 11 – 14s – a space to hang out, chat, have some fun and relax.</p>
Jubilee Hall Breakfast	<p>First Sunday of the month 8.30-10</p> <p>Our breakfasts are very popular – three courses freshly prepared and served at your table by our friendly committee. A great sociable way to start a Sunday, with no washing up!</p> <p>Once a month, on Saturday mornings, the committee opens the hall to everyone for coffee, cookies and chat</p> <p>Phone 07770 599701 or email: jubileehall87@yahoo.com</p>
Knitting Club	<p>The nearby Pickleberry Coffee Shop (Fitzroy Farm, Edington) has a knitting group. Every Wednesday afternoon 1.30pm till 4.00pm. Just pop in and join us for a relaxing afternoon of knitting. All welcome at Fitzroy Farm</p>
Monday Gang	<p>A group of volunteers who meet together to maintain the churchyard of James Church and surrounding areas, including Church Road, the Church Steps, Church Stream banks and the ongoing footpath to Upper Garston Lane. Within the church area there are many places reserved for nature conservation, including purpose-made habitats of fallen trees and natural timber, plus areas that are left wild to encourage the colonisation by insects and wild flowers.</p>
Morphew School of Dance	<p>The Church Institute Wednesdays (Term time only) 3:00pm - 8:30pm</p>
Phoenix Art	<p>Tuesdays 9.30-12.30 in the Jubilee Hall</p> <p>Discover your creative talents! Enjoy a peaceful morning working on your projects.</p>
Pickleberry Ladies	<p>Thursdays from 11am upstairs at the nearby Pickleberry Coffee Shop at Fitzroy Farm, Edington.</p> <p>All ages welcome for coffee, cakes and a chat. Contact esther@brattonparishchurch.org.uk</p>



Organisation	Description
Pilates	<p>Monday 9.30 - 10.20 in the Jubilee Hall. In summer months, if the weather is good, classes are held in the garden of Bratton Church Institute.</p> <p>This is a mixed-level class and everyone is welcome. Find those long-lost muscles!</p> <p>Thursday 10.00 - 10.50, as above</p> <p>Another class for beginners/improvers.</p> <p>Contact Amie on amiesarahhawker@gmail.com</p>
Reeves Orchard	<p>This community orchard is maintained by a group of volunteers who meet weekly to keep the paths clear, the trees pruned to perfection and encourage the Pollinator Project area to thrive.</p> <p>There is an annual mowing and cutting down of all the grass around August when wildflower seeds have set and dropped.</p> <p>In the autumn an Apple Juicing Day takes place – look out for a notice in the Parish News!</p> <p>They also support Bratton School' wildflower garden.</p>
Revive Café	<p>Monday afternoon in term time, 2.30 – 4.30pm @ the Baptist Chapel.</p> <p>Pop in for a cup of tea or freshly brewed coffee and a slice of cake. Craft activities for the children provided.</p>
Royal British Legion	<p>The Bratton Branch of the Royal British Legion was formed in March 1943 enjoying strong support within the village.</p> <p>The Branch has over fifty members, the majority of whom live in Bratton.</p>
Royal British Legion – Women's Section	<p>The Royal British Legion Women's Section meets monthly in the Jubilee Hall and has a varied programme of food, fun and friendship with occasional speakers. These are enjoyed by members with an age range of 15-95 years of age. The branch welcomes everyone and you do not have to be associated with the Forces.</p>
Speedwatch	<p>A group of trained volunteers who are concerned about road safety in the Village. They support the Police by recording speeding vehicles using a hand-held radar device and reporting speeders to the Police for action.</p>
St James' Church	<p>A welcoming, friendly church situated on the south side of Bratton in a beautiful setting in a combe leading up onto Salisbury Plain. They have an average size congregation and make a major contribution to the village community by organising several events for all during the year. Mains water is piped into the church and a kitchenette installed. A garden of remembrance has also been created in the southern-most churchyard extension. Further information can be found at: https://www.beciebenefice.org/index.html and www.achurchnearyou.com/bratton-wiltshire</p>
Steeple Rocks Choir	<p>Meet Mondays 7.30 - 9.30 in the Jubilee Hall</p> <p>A very popular large rock choir conducted by Adrienne Hale, with members from far and wide. Contact Adrienne on adriennehale99@gmail.com and see more information on https://www.facebook.com/SteepleRocksChoir</p>
Teabags	<p>Tuesdays 1-5 in the summer months, Bratton Church Institute garden</p>



Organisation	Description
Tidy Bratton Group	<p>The Tidy Bratton Group comprises a number of community-minded residents who meet together approximately once a month to keep our village looking at its best. The group works closely with the Parish Council and Parish Steward to ensure that all our footpaths, highways and bus shelter and bus stops are clean, tidy and well-maintained and that village grit bins are replenished. Anyone can join in. The dates are advertised on posters around the village, as well as by email to everyone who has asked to be included on the mailing list.</p> <p>Every year, Bratton participates in Wiltshire's Best Kept Village competition. and in 2022 was judged to be the 'Winner of the Winners' (known as the Laurence Kitching award). In 2023 Bratton was judged the 'Best kept large village' in Wiltshire.</p>
U3A Art Group	Meet First and third Tuesdays, 9.30-12 in Bratton Church Institute
Well-Being Revive	<p>Well-being Revive opens every Monday from 1 – 2.30pm in the Baptist Chapel.</p> <p>Provide a calm, welcoming and inclusive space to find refreshment for mind and soul. Mindful and creative activities provided in a space where it is ok not to be ok!</p>

